



**Three T**  
Interreg Europe



European Union  
European Regional  
Development Fund

# ThreeT Thematic Trail Trigger

*Good Practices documented*

Brasov County Council  
Partner 7 - (RO)  
(threet@judbrasov.ro)

20-21/03/2019

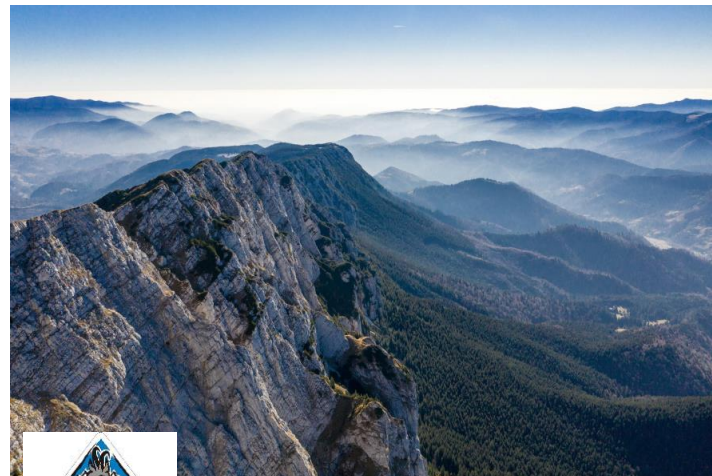
# List of Good Practices

- ❶ Eco-touristic trail network in Poarta Carpatilor
- ❷ Thematic trails within Piatra Craiului National Park
- ❸ Connecting trails between Historical Center and Rasnov Citadel
- ❹ The network of hiking and biking trails in Transylvanian Highlands

# Good Practices in Brasov County



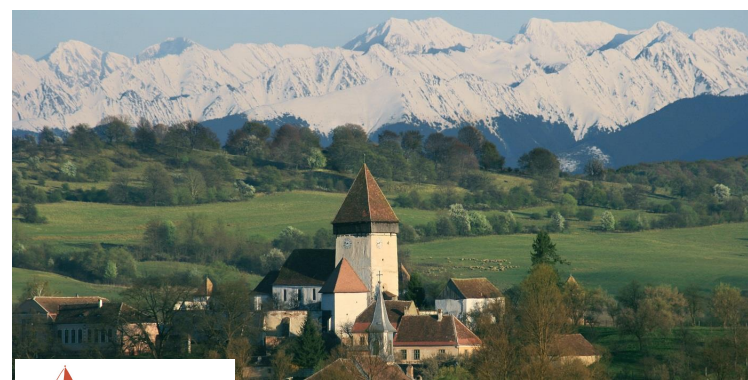
**Eco-touristic trail network  
in Poarta Carpatilor**



**Thematic trails within Piatra  
Craiului National Park**



**Connecting trails between Historical  
Center and Rasnov Citadel**



**The network of hiking and biking  
trails in Transylvanian Highlands**

# Good Practice n.1

TITLE	<b>Eco-touristic trail network in Poarta Carpatilor</b>
Short description	The practice aims to create prerequisites for ecotouristic development as an essential factor in preserving the agro-pastoral landscape and the biodiversity by implementing a network of ecotrails.
Key words	Infrastructure, Information and communication, Trail management and governance
Location	Commune Fundata and Moieciu de Sus village – Brasov County (Ro)
Financial	165.000 Eur
Innovative	The main innovation of our project was to set up a online GIS for visitors of the trails. Through our website and the implemented GIS (and in future a separate application) visitors have access to detailed maps (topography, geology, history, botany etc), locations of POIs (geology, habitats, crafts, artists, traditional architecture etc) and own location for orientation through mobile phones.
Transferability	All activities included in our project which generated the ecotrail network in Poarta Carpatilor destination are applicable to other areas and adjust them to suit local conditions.
Hyperlink	<u><a href="#">Web</a></u> // <u><a href="#">Video Link</a></u>

## Good Practice n.1

### Eco-touristic trail network in Poarta Carpatilor

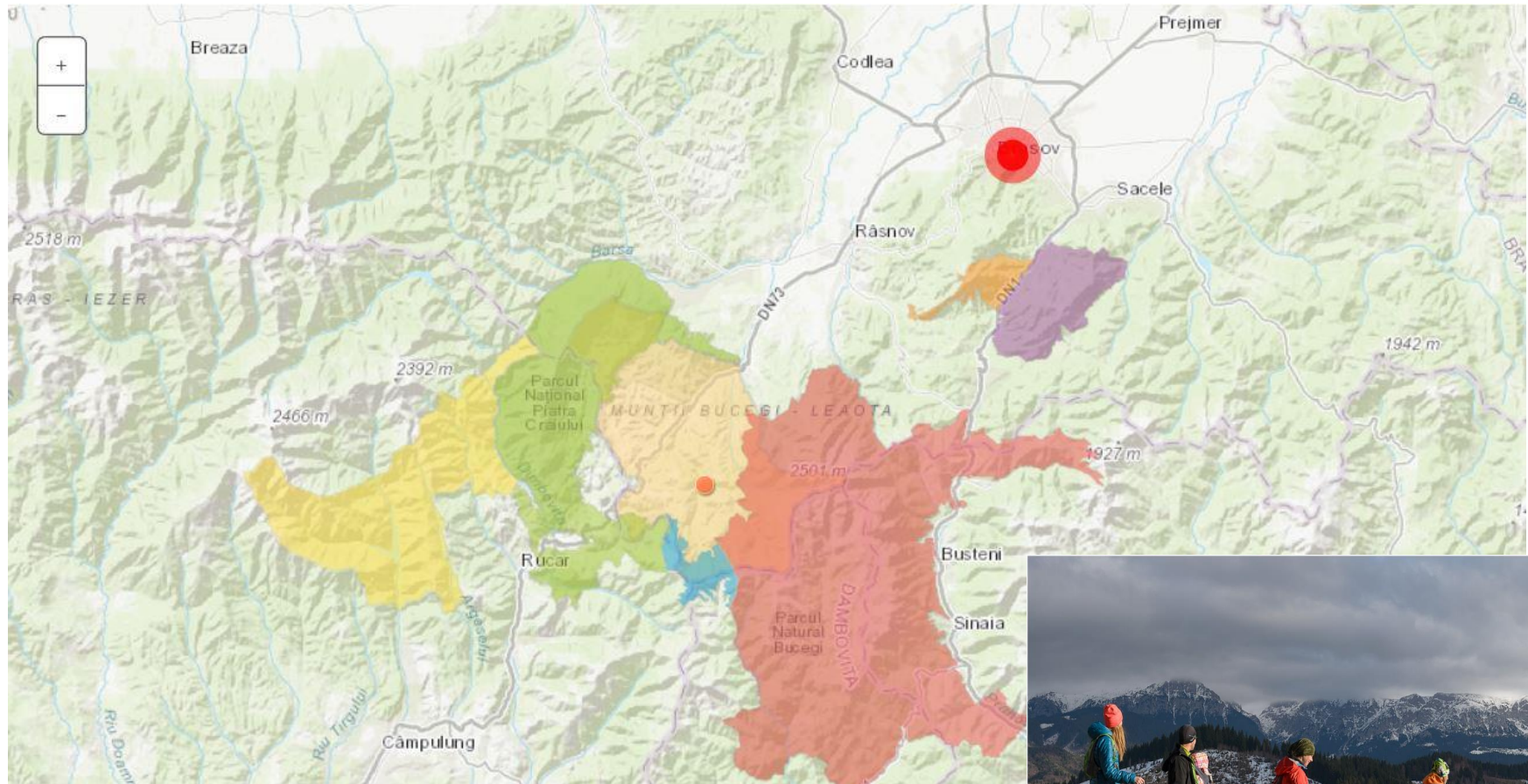
Further development of the practice	
	<p>Extension of the eco-touristic trail network</p> <p>Connection with neighbor destinations</p> <p>Embedding of the destination Poarta Carpatilor in a larger Geopark concept</p>
	Change of visitors behavior ("form weekend tourist to several day visitor")
	Change of the urbanistic building plans to include the eco-touristic concept
	Conservation of the HNV farmlands and the biodiversity
	Develop a local certification for products and services in Poarta Carpatilor area





## Good Practice n.1

### Eco-touristic trail network in Poarta Carpatilor



## Good Practice n.1

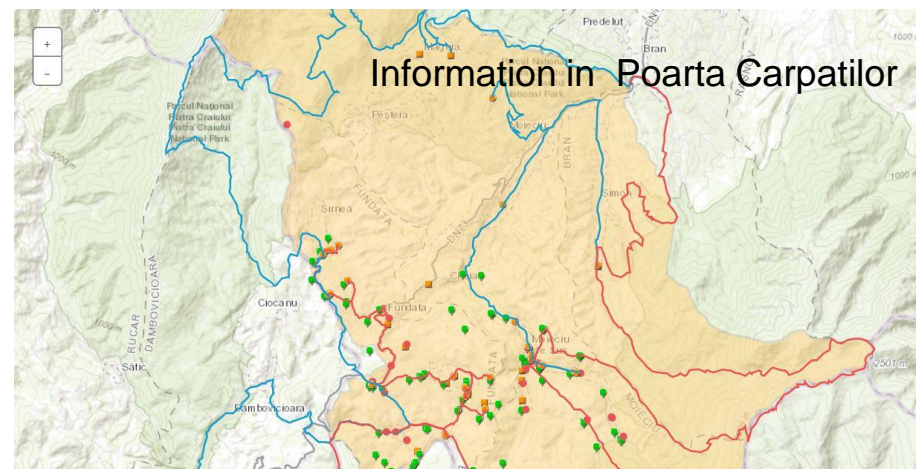
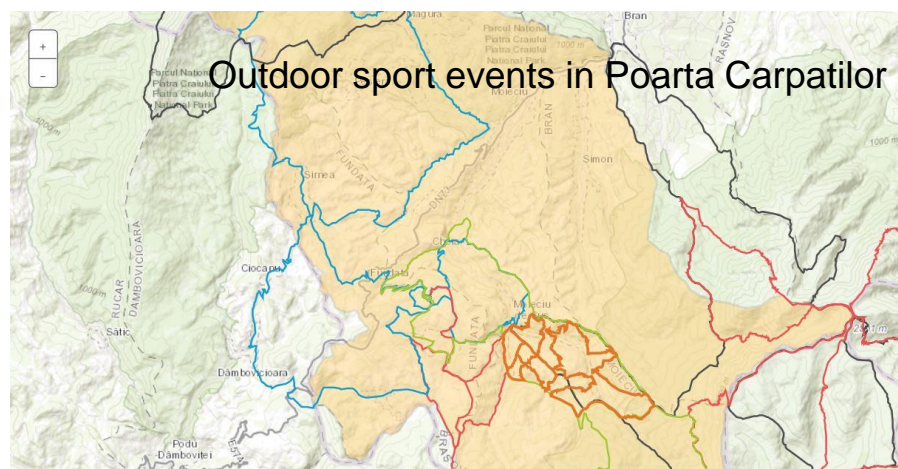
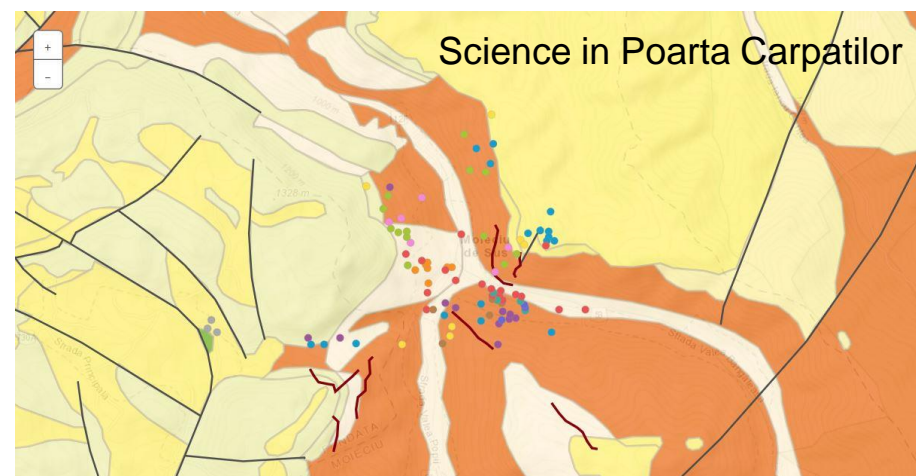
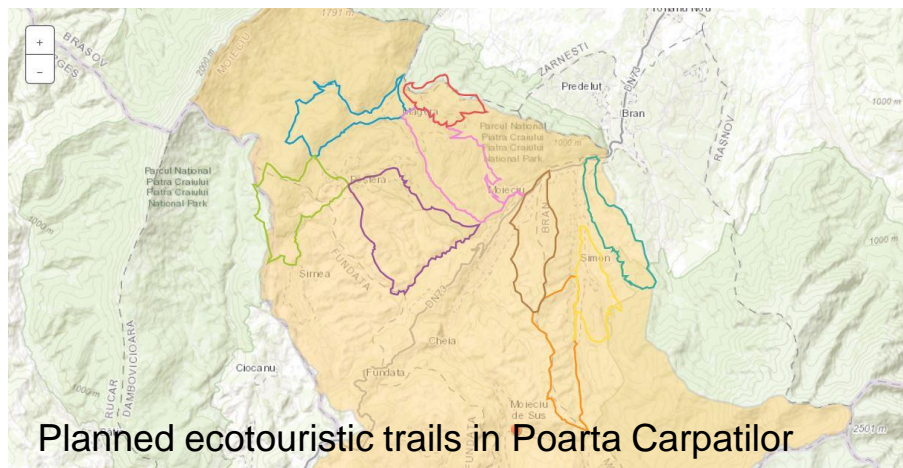
### Eco-touristic trail network in Poarta Carpatilor





# Good Practice n.1

## Eco-touristic trail network in Poarta Carpatilor



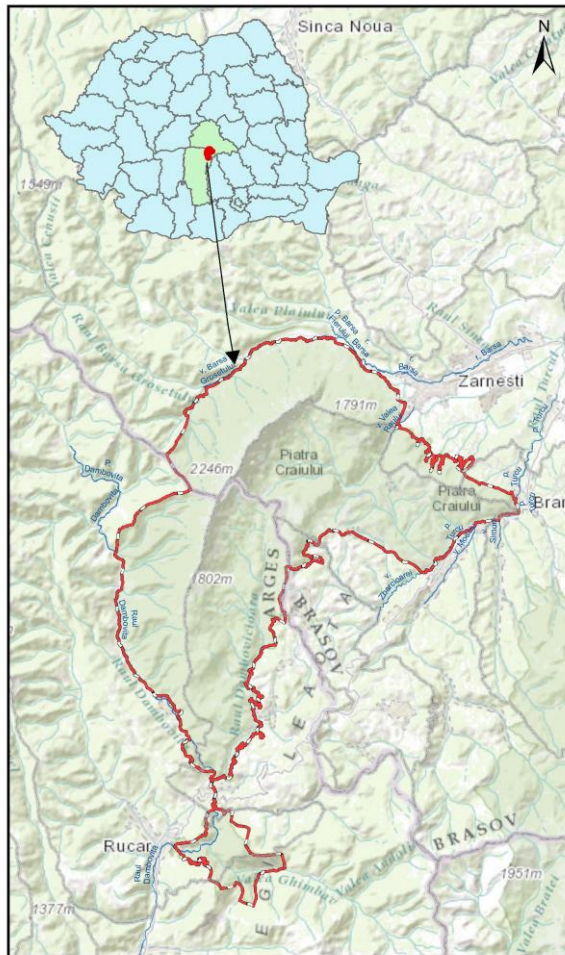


# Good Practice n.2

TITLE	<b>Thematic trails within Piatra Craiului National Park</b>
Short description	The practice acts as a tool for the information and awareness regarding the natural values of Piatra Craiului National Park.
Key words	Biodiversity preservation, natural heritage (Natura 2000), sustainable tourism, education, awareness
Location	Thematic trails within Piatra Craiului National Park
Financial	11.875 euro
Innovative	Compared to the management of other protected areas in Romania, Piatra Craiului National Park was one of the three pilot protected areas where the management started in 1999, whereas the rest of the national and nature parks in Romania were managed by an administration from 2004. The three pilot protected areas, among them Piatra Craiului NP, had a head start in management.
Transferability	Project details regarding the establishment of the thematic trails; the design of the information boards and signs; used materials to increase the durability of the information boards.
Hyperlink	<a href="#"><u>Map</u></a> // <a href="#"><u>Video Link</u></a>

## Good Practice n.2

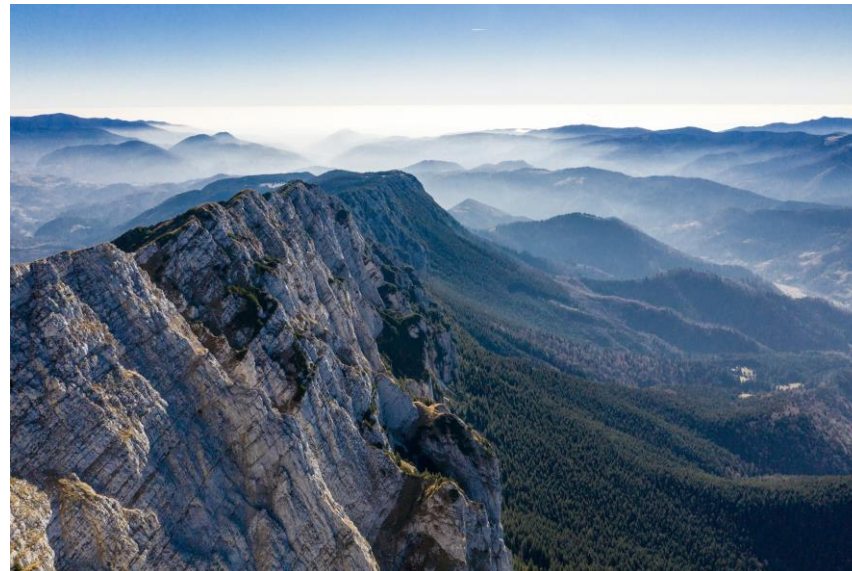
### Thematic trails within Piatra Craiului National Park



Localizarea în regiune a Parcului Național Piatra Craiului

Legenda  
Limita Parcului Național Piatra Craiului

Piatra Craiului National Park is a protected area established in 1990 for conservation of biodiversity and landscape, of valuable species, to promote and encourage tourism, and for public awareness and education in the spirit of protecting nature and its values. It is situated in the Southern Carpathians including the entire Piatra Craiului Massif, what is a 25 km long calcareous ridge, reaching the highest altitude at Baciului Peak - 2238 m. Piatra Craiului National Park is overlapped by two Natura 2000 sites. One, for the protection of habitats and species, and the other one for the protection of birds.



## Good Practice n.2

### Thematic trails within Piatra Craiului National Park

**The good practice examples are composed of 4 hiking trails, respectively:**

1. Zărnești – Șaua Crăpăturii – Curmătura
2. Zărnești – Prăpăștiile Zărneștilor - Curmătura - Șaua Curmăturii - Piatra Mică – Zănoaga
3. Botorog – Zanoaga
4. Valea Curmaturii

The second one, up until Curmatura Chalet, it is also a biking trail.

All four trails are located in the North - East side of the Piatra Craiului Massif and offer spectacular landscapes, protected flora and fauna, Jurassic geological processes and breathtaking views.



Toward Șaua Crăpăturii



To Piatra Mică Summit



## Good Practice n.2

### Thematic trails within Piatra Craiului National Park

#### Tourist activities on the presented trails



Biking in Zarnesti Gorges



Climbing in Zarnesti Gorges



Hiking from Curmatura to Botorog



Education in Curmatura Valley



Information board in Zarnesti Gorges



## Good Practice n.2

### Thematic trails within Piatra Craiului National Park

#### Tourist infrastructure



**Proposed for future thematic trail: *Plaiu Foii – Lanturi – Vf. La Om***



# Good Practice n.3

TITLE	<b>Connecting trails between Historical Center and Rasnov Citadel</b>
Short description	The new elevator is a project using EU structural funds, aimed at easing the accessibility of tourists to the Rasnov Fortress and developing new opportunities for local entrepreneurs.
Key words	Sustainable: tourism, Innovation, Urban Mobility / Cultural heritage / Infrastructure and service / Soft-mobility transport means
Location	Rasnov City, Bv - Ro
Financial	3.532.679 Eur (Local funding = 1.995.494 Eur)
Innovative	The elevator's construction has solved important issues regarding the tourist as well as city infrastructure thus having a dual approach. Additionally it has led to an improved access on the elevators' viewpoint platform as well as the Citadel area for people with disabilities.
Transferability	Fundamental to the concept of durable development is the necessity to integrate economical and social objectives with ecological and environmental ones, all of which can be found in all phases pertaining to the development and implementation of the project. Seeing as how Romania/EU is rich in similar historical monuments, most aspects pertaining to this project can easily be transferred to similar locations.
Hyperlink	<b><u>Web</u> // <u>Video Link</u></b>



## Good Practice n. 3

### Connecting trails between Historical Center and Rasnov Citadel

Keywords	
Sustainable tourism-Infrastructure and service	Up until 2015 access was possible only from Valea Cetatii, where a small parking lot exists as well as an approximately 1 km sidewalk leading up to the main entrance. On most days parking spots were insufficient , cars illegally parked by the national road being the cause of numerous road blocks. tourists arriving here had no contact with the citys' historical centre. The elevator is accessible for people with disabilities and is easily accessible from the underground parking lot.
Innovation	The elevator's construction has solved important issues regarding the tourist as well as city infrastructure thus having a dual approach (compared to the elevator in Deva where only tourists have access). Additionally it has led to an improved access on the elevators' viewpoint platform as well as the Citadel area for people with disabilities.
Urban Mobility-Cultural heritage	The inclined elevator (an ecological means of transport, with a high energy efficiency rate) replaces the traditional means of transportation which up until this point has been by car, to the Rasnov Citadel (historical A class monument, with over 400000 visitors/year).
Soft-mobility transport means	For walking enthusiasts there is a trail parallel to the elevator, which up until 2015 wasn't entirely visible. In the future it could be made into a themed trail, with biking facilities being installed at ground level.

## Good Practice n.3

### Connecting trails between Historical Center and Rasnov Citadel





## Good Practice n.3

### Connecting trails between Historical Center and Rasnov Citadel





## Good Practice n.3

### Connecting trails between Historical Center and Rasnov Citadel



**Point of view at the base  
of the Citadel towards  
Rasnov city and Tara  
Barsei (Buzerland)**

All pictures: Rosenau Tourism  
Association





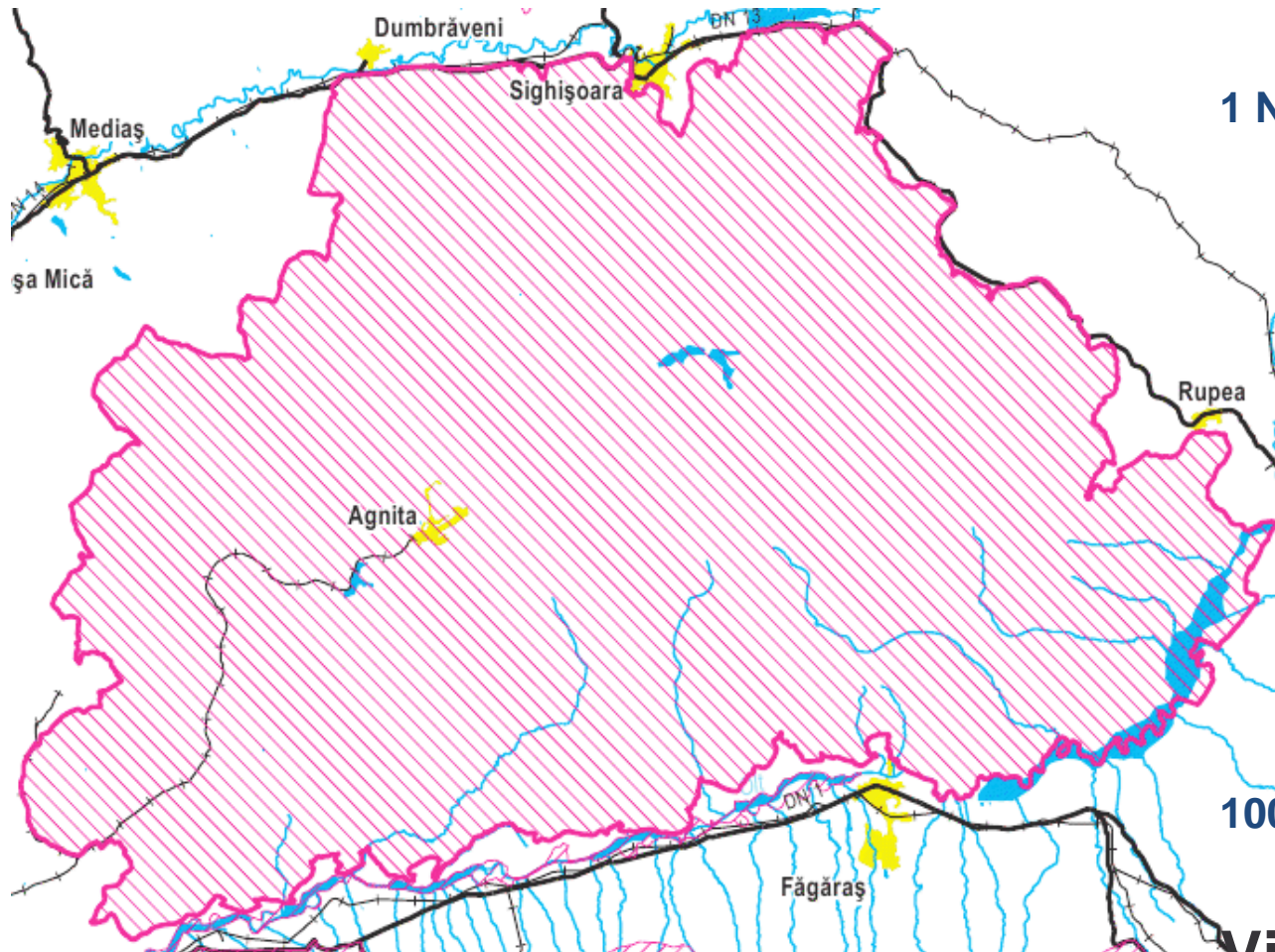
## Good Practice n.3

### Connecting trails between Historical Center and Rasnov Citadel



# Good Practice n.4

## The network of hiking and biking trails in Transylvanian Highlands



**5 Natura 2000 sites**

**1 National Protected Area**

**237.515 hectares**

**44 communes**

**66.000 inhabitants**

**5 World Heritage sites**

**100 villages with fortified churches**

**Video Link**



## Good Practice n.4

### The network of hiking and biking trails in Transylvanian Highlands

Three T 





# The network of hiking and biking trails in Transylvanian Highlands





## Good Practice n.4

### The network of hiking and biking trails in Transylvanian Highlands





# Good Practice n.4

TITLE	<b>The network of hiking and biking trails in Transylvanian Highlands</b>
Short description	A private initiative was in charge with developing an extensive network of hiking and biking trails to connect the villages with the fortified churches, the main attraction of the Transylvanian Highlands destination.
Key words	Infrastructure and service/ Soft-mobility / Entrepreneurship (rural areas), Green infrastructure, Mobility (rural and sub-urban areas), Mobility (tourism regions), Natural heritage (Natura 2000), Support to sector (tourism & rural SMEs), Support to SMEs (tourism & destination management), Sustainable tourism
Location	Transylvanian Highlands – Brasov County Highlands
Financial	(around) 260.000 Eur
Innovative	Using the existent trails used by locals also will assure an easier maintenance / Increasing the accessibility to cultural heritage sites using the green transportation / Using the new technologies to make the trails more accessible / Developing thematic events to promote the trails / The coordination consortium.
Transferability	The entire practice can be multiply: design, marking, information panels, materials & app, maintenance & coordination
Hyperlink	<a href="#"><u>Map &amp; Mobile application</u></a> // <a href="#"><u>VideoLink</u></a>



**Three T**  
Interreg Europe



European Union  
European Regional  
Development Fund

Thank you!